

COMPACT



PROFIBUS

COMPACT AND RELIABLE CONNECTIONS!

Murrelektronik offers three new M12/Sub-D-Profibus adapters with standard B-coded M12 and Sub-D connections. An additional Sub-D diagnostic input can connect devices for bus analysis.

With the "Plug & Play" concept, these adapters ensure simple and reliable connections and guarantee faultless data transfer of the Profibus systems. Models are available with M12 connections with 35, 90, and 180 degree angles.

YOUR ADVANTAGES

- Compact dimensions for confined space
- Faultless Profibus connection with B-coded M12 connectors
- Reliable Profibus quick connections: within seconds
- Simple installation does not require special knowledge
- Completely shielded zinc die-cast housing for EMI/RFI safety
- Switch can be externally operated to terminate bus
- Switch status can be seen from the front
- Second Sub-D provides programming and diagnostic options
- Hexagonal screw UNC 4-40 ensures a tight fit
- 100% tested bus connectors and connection cables guarantee reliability

35°



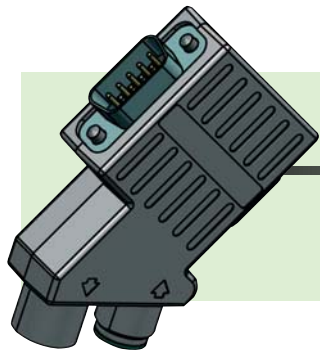
90°



180°

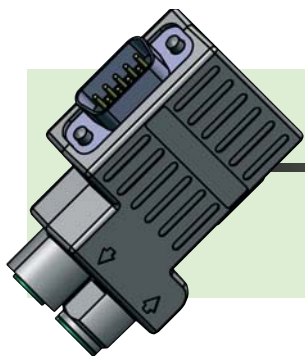


OVERVIEW



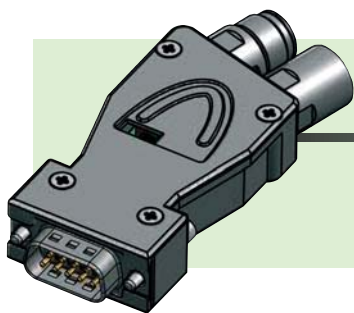
M12/SUB-D PROFIBUS-ADAPTER 35°

Art.-No. 7000-99401-0000000



M12/SUB-D PROFIBUS-ADAPTER 90°

Art.-No. 7000-99411-0000000



M12/SUB-D PROFIBUS-ADAPTER 180°

Art.-No. 7000-99421-0000000



For the appropriate M12 fieldbus connectors see our general catalog
or our online shop at: www.murrelektronik.com